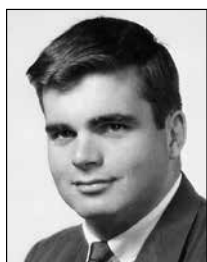




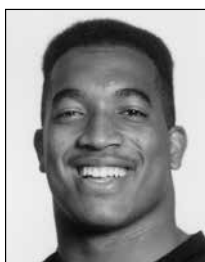
TEAM CAPTAINS



1890 C.L. Edmundson John Nixon	1948 Bob Spicer	Tom Perry, ILB	1993 Charles Johnson, WR
1891 #Pat Carney	1949 Ed Pudlik	Leon White , C	Ron Woolfork, OLB
1892 *Pat Carney	1950-1958 Appointed each game	1978 Jeff Lee, ILB	1994 Christian Fauria, TE
1893 Pat Carney	1959 Bob Salerno	James Mayberry, TB	Chris Hudson, CB
1894 #Harry Gamble	1960 Bill Elkins	Matt Miller, OT	1995 Appointed each game
1895 William Caley	1961 Joe Romig	Stuart Walker, DE	1996 Appointed each game
1896 Harry Gamble	1962 Ken Blair	1979 Stan Brock, OT	1997 Appointed each game
1897 Ed Dillon	1963 Tom Kresnak	Mark Haynes, CB	1998 Marlon Barnes, TB
1898 Harry Chase	1964 Jerry McClurg	Brian McCabe, ILB	Darrin Chiaverini, WR
1899 Harold Garwood	Ted Somerville	Laval Short, DT	Hannibal Navies, OLB
1900 Wilson Turman	1965 Larry Ferraro	Bill Solomon, QB	1999 Ryan Johanningmeier, OG
1901 George Carlson	Steve Sidwell	1980 Charlie Davis, QB	*Ben Kelly, CB
1902 Al Tonkin	Frank Van Valkenburg	Steve Doolittle, ILB	Mike Moschetti, QB
1903 Percy Foote	1966 John Beard	Brant Thurston, OT	2000 Tom Ashworth, OT
1904 Everett Owens	Hale Irwin	1981 Pete Perry, DE	Brady McDonnell, DE
1905 Ray Roberts	1967 John Farler	Bob Sebro, OG	2001 Justin Bannan, DT
1906 John Salberg	Kirk Tracy	1982 Dave Hestera, TE	Andre Gurode, C
1907 Nat Farnsworth	Ron Scott	Mark Shoop, DT	Michael Lewis, SS
1908 Claire Coffin	1968 Rocky Martin	1983 Victor Scott, CB	John Minardi, WR
1909 Elmer Stirrett	Mike Schnitker	Steve Vogel, QB	2002 Justin Bates, OG
1910 John O'Brien	Mike Montler	1984 Lee Rouson, TB	Tyler Brayton, DT
1911 John McFadden	1969 Bobby Anderson	George Smith, DT	Wayne Lucier, C
1912 Warren Hartman	Bill Collins	1985 Junior Ili, OG	2003 Marwan Hage, OG
1913 Carl Knowles	Mike Pruett	*Barry Remington, ILB	Medford Mooror, FS
1914 John Donovan	1970 Don Popplewell	1986 Steve Beck, SS	*Bobby Purify, TB
1915 Ray Nelson	Phil Irwin	Eric Coyle, C	Sean Tufts, ILB
1916 Elbridge Chapman	1971 Brian Foster	Barry Remington, ILB	2004 *Joel Klatt, QB
1917 Wilbur Adams	Bill Kralicek	1987 Mark Hatcher, QB	Matt McChesney, DE
1918 Les Eastman	Herb Orvis	Barry Helton, P	Bobby Purify, TB
1919 George Costello	1972 Cullen Bryant	Mickey Pruitt, SS	Sam Wilder, OT
1920 Alva Noggle	Chuck Mandrill	1988 Don DeLuzio, ILB	2005 James Garee, DE
1921 Carl Fulghum	Rick Kay	Erik Norgard, C	Brian Iwuh, OLB
1922 Del Jack	1973 Randy Geist	1989 Bill Coleman, OT	Joel Klatt, QB
1923 Art Quinlan	William McDonald	Mike Jones, ILB	Lawrence Vickers, FB
1924 Fred Hartshorn	1974 Jeff Geiser	Erich Kissick, FB	2006 Mason Crosby, PK
1925 Hatfield Chilson	Doug Payton	Bruce Young, SS	Brian Daniels, OG
1926 Bill Bohn	Greg Westbrook	Sal Aunese (<i>honorary</i>)	Thaddaeus Washington, ILB
1927 George Wittemeyer	1975 Pete Brock, C	1990 Appointed each game	2007 R.J. Brown, ILB
1928 Buck Smith	Mike McCoy, S	(<i>non-conference games</i>)	Hugh Charles, TB
1929 Bill Smith	Bob Simpson, DT	Joe Garten, OG	Jordon Dizon, ILB
1930 Bernie Buster	David Williams, QB	Alfred Williams, OLB	Tyler Polumbus, OT
1931 Paul Sawyer	1976 Don Hasselbeck, TE	1991 Jay Leeuwenburg, C	Terrence Wheatley, CB
1932-1945 Appointed each game	Charlie Johnson, NT	Greg Thomas, FS	2008 Maurice Cantrell, FB
1946 Gus Shannon	Emery Moorehead, WB	1992 Greg Biekert, ILB	Daniel Sanders, OG
1947 Appointed each game	Bart Roth, ILB	Chad Brown, OLB	Ryan Walters, FS
	1977 Brian Cabral, ILB	Jim Hansen, OT	Patrick Williams, WR



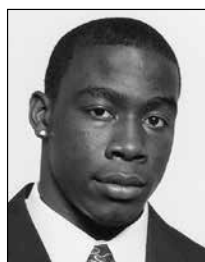
John Farler



Michael Jones



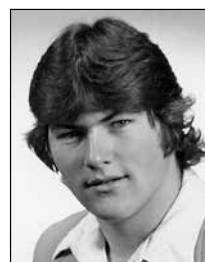
Joel Klatt



Michael Lewis



Bob Salerno



Bob Sebro



Phillip Lindsay



Sefo Liufau



Kenneth Olugbode



Nate Solder



Nelson Spruce



Derrick Webb

2009 Marcus Burton, ILB
Riar Geer, TE
Jeff Smart, ILB
2010 Jalil Brown, CB
Cody Hawkins, QB
Scotty McKnight, WR
Nate Solder, OT
2011 Tyler Hansen, QB
Jon Major, ILB
Ryan Miller, OG
Anthony Perkins, SS
2012 *David Bakhtiari, OT
Will Pericak, DE
Ray Polk, FS
*Derrick Webb, ILB
2013 Jack Harris, OT
*Paul Richardson, WR

Chidera Uzo-Diribe, DE
Paul Vigo, OLB
Derrick Webb, ILB
Connor Wood, QB
2014 #Addison Gillam, ILB
#Sefo Liufau, QB
Daniel Munyer, OG
Juda Parker, DT
Terrel Smith, SS
*Nelson Spruce, WR
2015 *Chidobe Awuzie, CB
Jered Bell, S
*Addison Gillam, ILB
*Alex Kelley, C
#Phillip Lindsay, TB
*Sefo Liufau, QB
#Derek McCartney, OLB

Jordan Murphy, FB
Stephane Nembot, OT
*Kenneth Olugbode, ILB
Christian Powell, TB
Nelson Spruce, WR
(four appointed each game)
2016 *George Frazier, TE/HB
*Jeromy Irwin, OT
*Phillip Lindsay, TB
Sefo Liufau, QB
Kenneth Olugbode, ILB
2017 George Frazier, TE/DE
*Rick Gamboa, ILB
Jeromy Irwin, OT
Afolabi Laguda, FS
Phillip Lindsay, TB
Derek McCartney, OLB

2018 Kabion Ento, WR
Nick Fisher, SS
Rick Gamboa, ILB
*Aaron Haigler, OT
Alex Kinney, P
Jay MacIntyre, WR
Juwann Winfree, WR
2019 Alex Kinney, P
*Nate Landman, ILB
Steven Montez, QB
Davion Taylor, S/OLB
*(selected at end of season;
coaches selected for
each game)*

(*—denotes junior;
#—denotes sophomore)



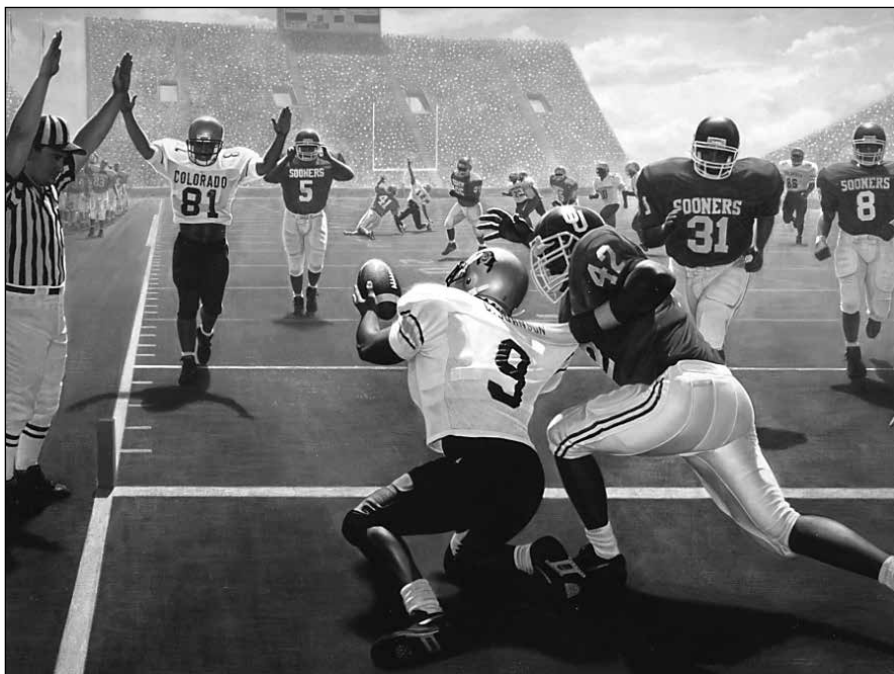
THE NATIONAL PLAY-OF-THE-YEAR



In 1992, Nu Skin International and CoSIDA started sponsorship of "The National Play-of-the-Year," honoring the most outstanding play annually in college football. Notre Dame won the inaugural honor in 1992, but the University of Colorado won for both the 1993 and 1994 seasons. Here's a closer look at CU's winning plays:

1993 (October 16; Colorado 27, Oklahoma 10)—Lamont Warren throws a 34-yard touchdown pass to Charles Johnson on the halfback option play. What made it special? Warren slipped on the slick artificial surface as he threw the ball, and some 40 yards later in the end zone, Johnson made the catch on the ground after he was interfered with. The play defied imagination, and is truly appreciated when looked at in slow motion.

1994 (September 24; Colorado 27, Michigan 26)—College football's play of the decade, this effort also won an "Espy" from ESPN for the play of the year in all of sports for 1994. As time expired, Kordell Stewart throws a 64-yard touchdown pass to Michael Westbrook, who made the catch after a Blake Anderson deflection. CU had trailed, 26-14, with under four minutes remaining, and trailed by five with 15 seconds left on its own 15-yard line after stopping Michigan on defense.



An artist's conception of CU's 1993 award-winning play.